

Fiete Worreschk Selection of exhibited works
2016 - current

fiete@hgb-leipzig.de



*Distilled Diffusion /
Hotel Discordia*
Mixed Media
2020

@ Spinnerei, IAM Kombinat -
„none“ (Group Exhibition)



Consisting out of two grayscale monochrome prints and one object, this work deals with dissolving memories of a social free-space in Leipzig Plagwitz. The glassen plastic was filled with vodka, saved from the past social free-space „Hotel Discordia“ represented in the Photographs, which diffused over time in the air of the group atelier and exhibition space, „IAM Kombinat“ at the Leipziger Baumwollspinnerei. Pointing to the none permanence, the temporality of both former industrial places, used for time as social free-spaces, eventually becoming gentrified real estates.



Effigy through the seasons
 Living sculpture
 2018 - Current

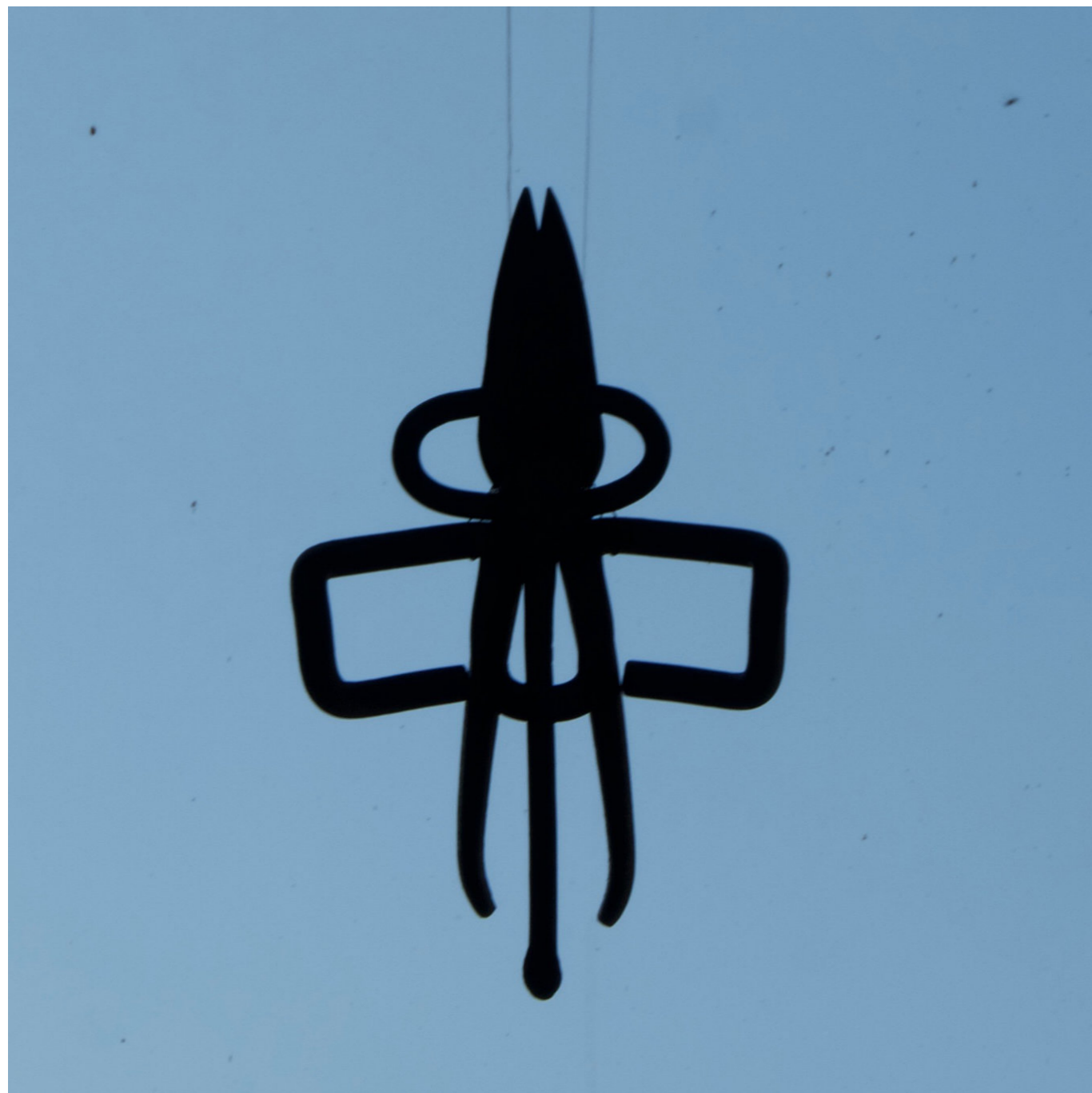
Wood, Soil
 Wisteria sinensis
 Wisteria floribunda
 Vitis vinifera

@ Backyard intersection of
 Federal Administrative Court
 Bibliotheca Albertina
 Academy of Fine Arts (HGB)
 Leipzig



This living sculpture is installed at the backyard intersection of the German Federal Administrative Court, the Bibliotheca Albertina and the Academy of Fine Arts (HGB) in Leipzig. Creating a place, by positioning a wooden skeleton, in form of a Human Effigy, on the unused backyards intersection, relating the three Institutions through its gesture and placement. The effigy's wooden structure subserves as a climbing support for varying tendril plants. The toxic wisteria, the intoxicative vine and the nourishing Passiflora-edulis. Exposed to the weather, over the course of the seasons, the perennial plants grow inside and around the wooden skeleton, interweaving each other and eventually entwine the whole Effigy. In the long term, the plants, together with the elements, dissolve the wooden structure, causing it to collapse and decompose.

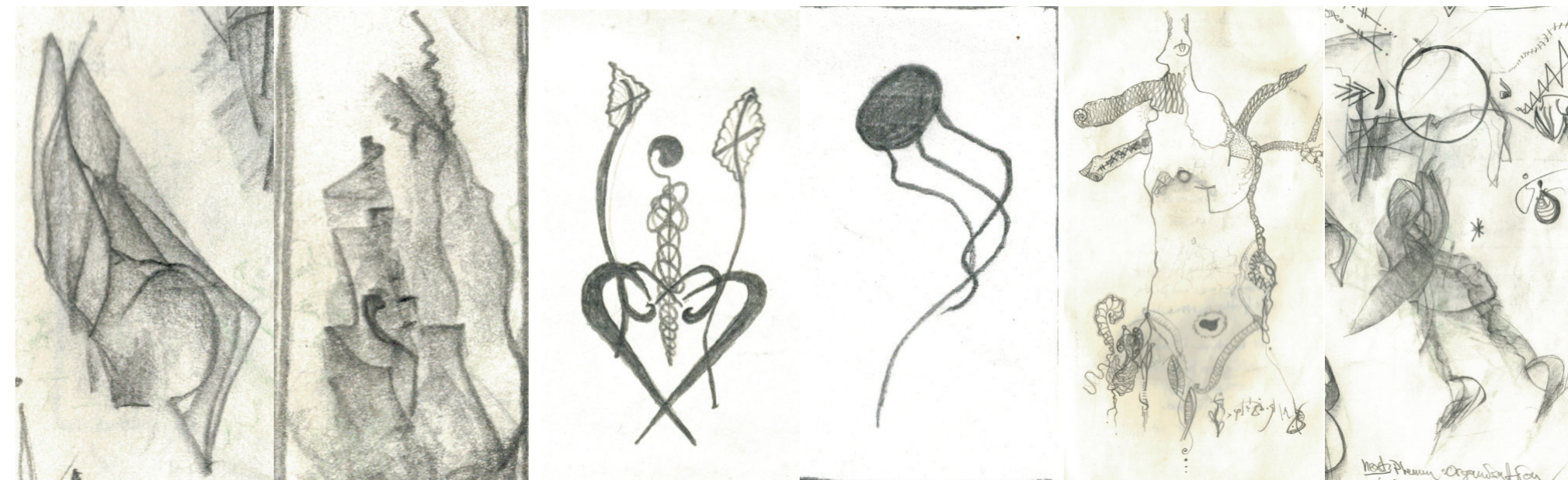
In its process this ongoing work touches on the topic of the human and plant relationship. Both metaphorically and practically. As these plants are artificially planted, by a human in an urban environment, they need nurturing in the beginning of their growth. In the dry seasons the plants need watering and pruning at the end of winter. The plants themselves thriving on their human support, filling out the skeleton, eventually decompose the human shape and probably cause it to collapse and then continue growing on their own. Raising the question how humans, as part of nature, are dealing with its relation in the „Web of Life“, especially in the wake of climate change in the so called „Capitalocene“.



Icon o.T.
Object and Drawings
2019

Iron, Pencil on Paper
3 ready-mades:
Scissors
Rail Chair
Switch Key

@ Spinnerei Spring Exhibition
IAM Kombinat
(Group Exhibition)



Found objects.

Recovered from the remains of the passed industry in Leipzig-Plagwitz, extracted from the decaying trackbeds and surrounding wasteland of the Spinnerei terrain a Metal-Object of an Ikon emerges through incorporation of rusty tools that were left behind.

Scissors, rail chair and a switch key, suspended from the high ceiling in front of a Window of the old factory and warehouse of the exhibition space, forming a pictogram-like silhouette against the changing brightness of the sky.

An enigmatic object. The reduced contours of a sign, a figure, or just a combination of abstract shapes? It alternates between a geometrically abstract and a concrete figurative pictogram. With its open symbolism, the object wants to open a space of interpretation for the viewer.

This space of interpretation is placed in an exaggerated iconographic backlight by hanging on the window above the recipient's head, which must look at the object in a gesture of looking up, stretching. A shape that invites you to recharge it with the beholders interpretation.

Created from the subconscious, a formed awareness that preceded a series of drawings formulated in psychomotor automatism. The representative embodiment of an abstract subject, which intends to separate, hold together and set the course through the processed tools, which has the ability to act, to shape.



Strata
Plastic
2019

Prehistoric Petrified wood
Shattered Smartphone Displays
Ice

@ ASFA Annex Delphi



Strata deals with human impact on the geological layers of the earth. Placed in the ancient hillside of Delphi, the plastic „strata“ shows non-deteriorating waste of the current human civilization in the recently proclaimed Age of the Anthropocene. The plastic consists of shattered smartphone Displays, collected in the streets of Athens and Delphi, layered in a phone sized brick of ice, resting on a piece of prehistoric petrified wood. Over the timespan of the exhibitions opening, corresponding with the setting sun, the ice melts, laying bare the shatter pieces of glas and plastic on the petrified wood.



Γνωθι σεαυτόν / *Know thyself*
Object / Participatory Art
2019

Three Double-sided Mirrors
Two Stools
Glass Door

@ The Art Foundation Athens



In a reference to the ancient saying „Know Thyself“, the artworks title points to the matter that self-awareness is not just a matter of self-reference but also in relation to other humans. Three double-sided mirrors, in the shape of triple bars, the mathematical Identity symbol, subserve as a contact point for empathic interaction between two people. Two persons are invited to position themselves on each one side of the object, reflecting partly there own face and the face of another person. The mirrors were installed on an glass-plate between two exhibition rooms with one chair on each side.



***How to make a video if you
don't have an idea worth
developing***

Mixed Media
2019

Video Projector
Corroded Mirror
Rear-Projection Screen
Headphones
Seat

@ HGB Galerie - PONC
Verletzbare Subjekte - with
Peggy Buth (Group Exhibition)

*afraid to move a single inch
froze up like a paralyzed
squelching thoughts
and unsteady
all falls inside-out
panic.*

How to make a video If you don't have an idea worth developing

*full stop.
get to the point
and start working...*

Feelings are often seen as something private, individual, although they are influenced by structures of power whose violent mechanisms engrave in a persons thoughts and feelings. The pressure to perform, for Self-Optimization to meet demands and to exploit oneself getting internalized as self-criticism in the face of neoliberal exploitation. Market-driven affects become personal Problems and getting accordingly ignored, hidden and repressed.

The practice of making these inner movements visible is the Method of this work by Fiete Worreschk. The artist shares their vulnerability, openly shows their wound and offers this context to recipients to reflect themselves.

The starting point for this work is a stream of thoughts which offers, embedded in a multi-layered multimedia installation, an encounter ones with fears.

In the fluid realm between self-recrimination and self-empowered the recipient becomes immersed in this video installation.

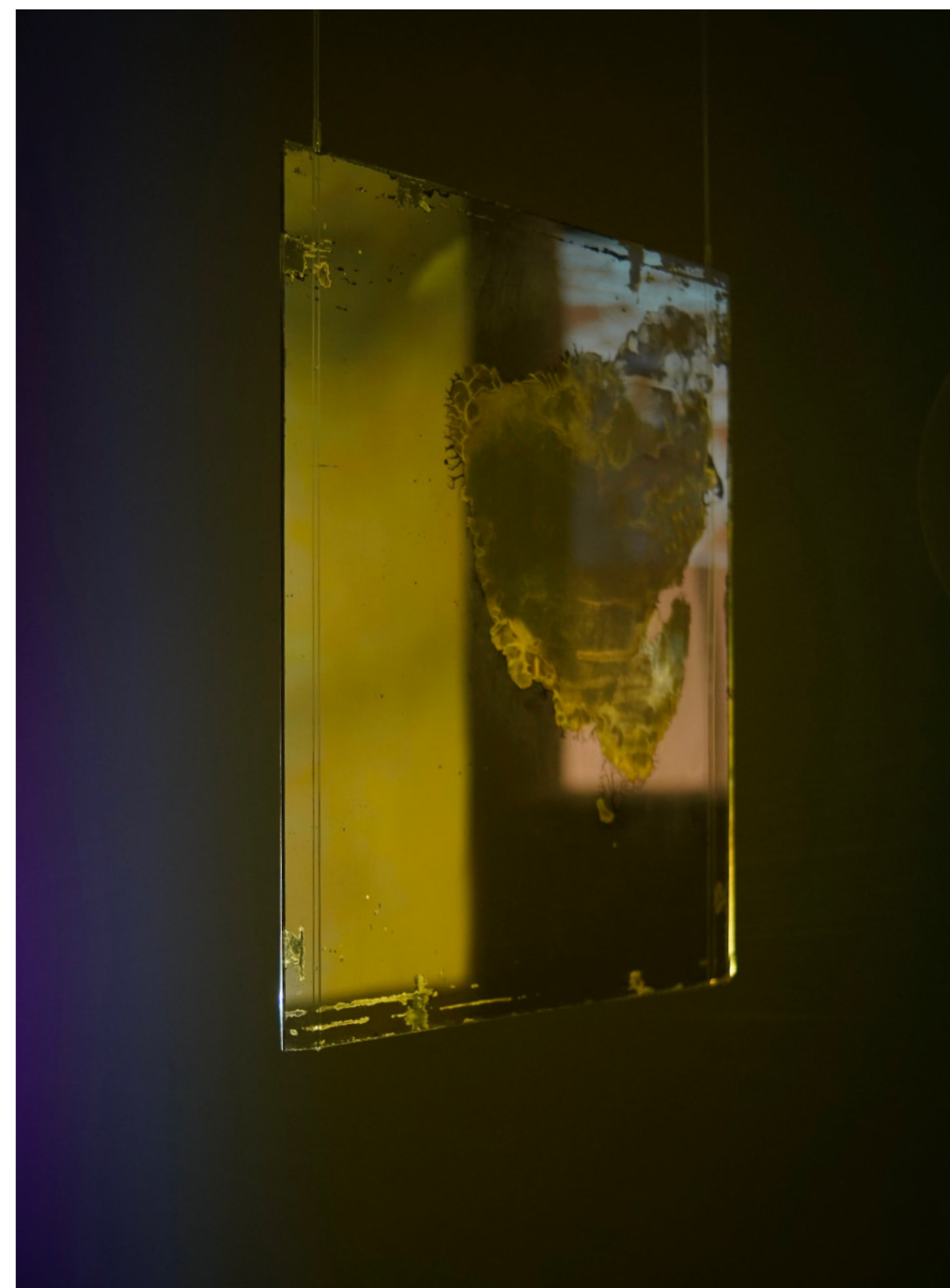
The sound of two Text-to-Speech voices streaming distance-less through the headphones Surrounded by Video-bearing plains in the front and back of the beholder.

- a corroded translucent mirror in front and a projection screen behind them.

Handheld camera recordings of self-examination mixed with moving, overlapping, fragmented 3D scans of the paralyzed subject, are displayed in a non-linear associative Imagery.

The mirror offers in this overwhelming complexity the viewer makes an offer for their own self-reflection, in the context of the fears shared by the artist and thereby becomes itself to the subject and part of the work for outside recipients.

The aim of participatory implementation is to show self-empowerment and accessible to the viewer close. Dealing with your own fragility creates space for a reassessment and may also make structural conditions visible and tangible. The private is political.





Rahmen der Möglichkeit
Performance / Installation
2018

Plasterwall
Stone
Metal
Duration 40 minutes

@ Neue Galerie für
Zeitgenössische Kunst -
Häselburg Gera - Overtone
Window (Group Exhibition)



For this Installation, a opening in the Gallery Wall was created, through a performative act. Expending the physical and metaphorical space of the exhibition room.

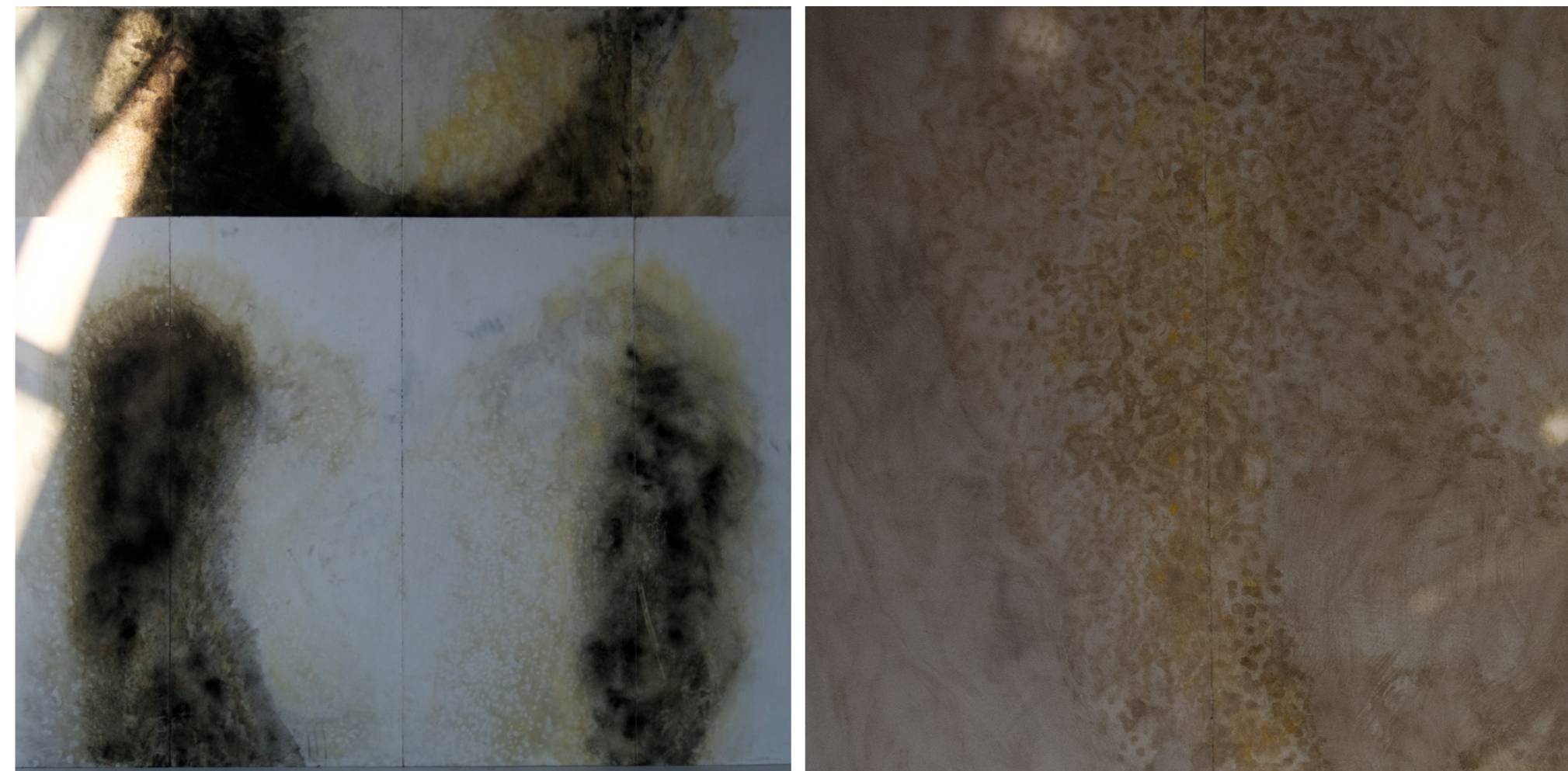
Through the bounding box of limited possibilities that were giving to the artist at side, they performed an opening of the Gallery Wall through the method of constant scraping with 3 small found Objects. Laying bare the underlying layers of historical architecture and extending the Gallery's exhibition space into the inside of the wall. The originated relics of this performances were left on the floor as part of the installed opening in the Galleries wall.



People can Fly
Painting/Installation
2018

Egg-Tempera and Soot on
Woodpanels
Metall-spring Mattress
4m x 2,5m

@ HGB Rundgang



Reflecting the deliverance of an altar panel. Painted in classical egg-tempera technic on woodpanels, this Mixed Media work its a recreation of a scenery from the streets of granada in 2013. In a quarter of the city were a visible amount of people sleeping in the streets, someone burned a mattress next to a wall, leaving a stain on the plaster and a tag saying „people can fly“. This image had a deep impression on me, being homeless at the time, and the wish to recreate this image. In the process of painting i worked with egg-tempera using soot from my stove as a pigment. The painting on 8 Wood panels was installed together with a burned out mattress at our Academies annually exhibition.



Communal Space
Participatory Sculptur
Intervention
2018

Public Space
Wood
Tools
Participants

Duration: 12 Days
21.June - 2.July

@ HGB Academy Backyard



As part of my pre-deploma, over the duration of 3 weeks, i converted a part of the Academy's backyard into a public workspace, were people were invitet to take part in a communal creation process. Participant could take a brake of there everyday stress and get involved on sculpting wood, learning new skills, exploring co-creation, having a coffee and conversation and participating in building a 6m tall wooden Plastic in the reduced shape of a human effigy.

The work it self was the process of co-creation, collaborative experiences, learning and exchangeing skills and approaches. Forming a social sculpture at the communal accessible space.



Communal Head
Participatory Sculptur
(workshop)
2018

Participants
Wood, Screws
Tools

Duration: 5 Days
30.May - 4.June

@ Italian Burning Boots -
Tuscany Hills, Rufina/Firenze



This participatory sculpture for an event by the Italian „Burner“ Community in the hills of tuscany, startet out as a workshop with the goal of creating a temporary installation that reflects and served its needs. The communities symbol, the head of the "Burning Man" Effigy, originally designed by Jerry James and Larry Harvey, who just passed away, should have been utilized as a communal space for discussion and contemplation inside of the 2,5x3m structure. Through the course of the process the focus shifted to the individual and collective experiences participants made during the co-creating process. The sculpture itself was only half finished at the end of the event and got ritualistically burned.



Personal Space
Virtual Reality
2017

VR System
Kinect
Steam
Personal Computer

@ HGB Rundgang - Raum234.bsp
(Group Exhibition)



Transferring my most intimate Personal Space into a publicly accessible immersive 3D environment through which the beholder moved with a Virtual Reality System.
Based on the interior of a real physical room in a 130 year old building which i renovated and lived in.

The Virtual Room was accessible over VR at the Academies annually exhibition and over the internet through the gaming software „Steam“ during the time of the Exhibition.
Making the private space public.

Working which glitches and open porous walls to allow some vulnerability in this space to be experienced.
Point to the vanishing privacy in our Post-Digital present and the age of mass surveillance.

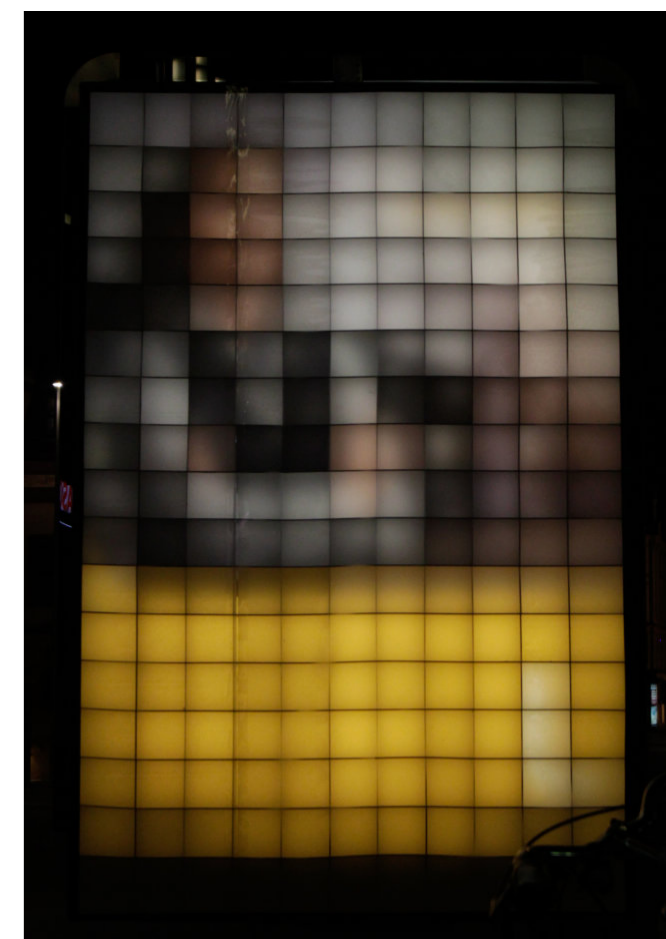
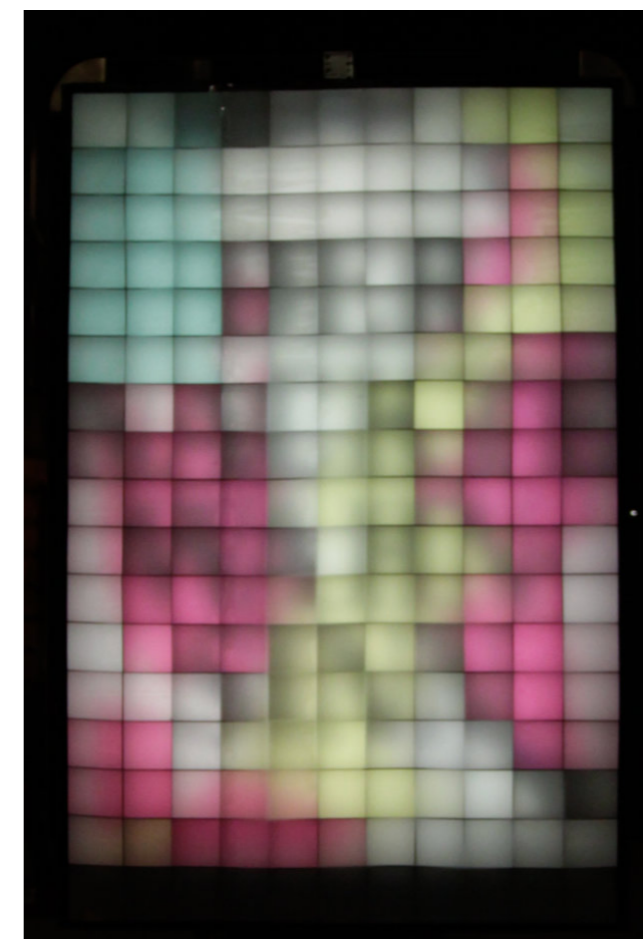
In 2020 the 3D environment got used as part of „Einstürzende Neubauten“ music video „Ten Grand Goldie“.



AdBlocker
Installation / Intervention
2016

Wood
Diffuser Film
Billboard light box
175x120cm

@ Augustusplatz - Public Space
City Center Leipzig



To intervene in the visual bombardment through advertisement-messages in public spaces, i transformed advertising panels into plains of color charts. Tinted by the colors of the underlying advertisement poster, dispensed of there message, opened to the interpretations of the beholder.

To block out the Ads I installed a pixel-grid, consisting of a translucent projectionfolie which is mounted on 10cm deep cardboard cubes, in front of a backlit billboard box. Resulting in 187 Pixels which downsampled the backlit Ads into a 11x17 Pixelngrid. The color and intensity of each pixel is determined by the correspondent colors of the underling poster. The different color information on the poster get mixed to an average color value on each 10 by 10 cm pixel.